



# ES-HEM5800

## 5 Part Auto Hematology Analyzers



LABORATORY



# ES-HEM5800

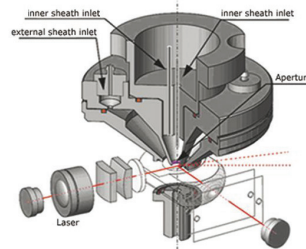
## 5 Part Auto Hematology Analyzer

### Performance

#### Laser Light scatter and Cell Histochemistry method

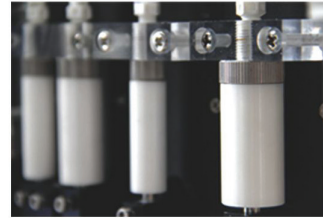
Semiconductor laser which has long service life and laser signal more stable. Through laser light scatter and cell histochemistry technology, provide size of cell, cell nucleus and cell particle.

Make classification and counting more accurate.



#### Accurate blood dispense system

ES-HEM5800 utilizes advance ceramic sample rotator valve platform to accurately segments blood with high precision.



#### Prediluted:

Select Prediluted mode,  
automatic injection prediluted reagent  
Easy operation and avoid manual errors



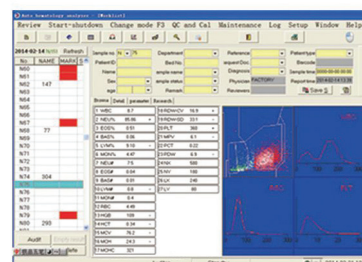
#### Original Reagent

Only 3 types :  
Sheath Hematon, Enzyme Detergent and Complex Cell Hemalyse.  
High quality original reagent ensure high accuracy



#### 12.1 inch touch screen

High resolution  
User-friendly software





# ES-HEM5800

## 5 Part Auto Hematology Analyzer

### Performance

#### Communication

4USB, COM, LIS



#### Unique high efficiency laser energy focusing technology

Patented high efficiency laser energy focusing, combining Fresnel lens focusing laser signal/Effectively avoid the interference of other light signals, and get stronger and more stable signal/More accurate classification

#### Unique double sheath flow focusing fluid technology Inner

Sheath flow closely packed cell, so that the cell are arranged in sheathflow axis, make sure flow through the testing center one by one under the action of flow power.

Outer sheath flow device, ensure cell were taken away quickly after flowing through aperture, avoid eddy current, in order to get more stable signal.

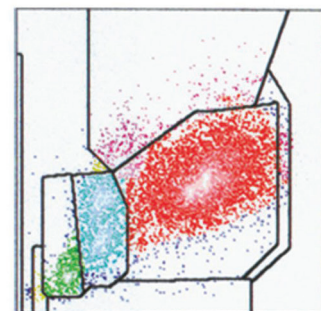
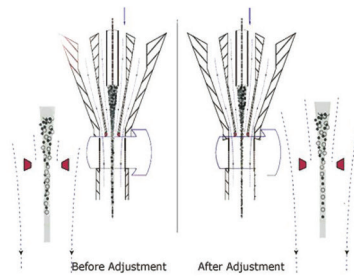
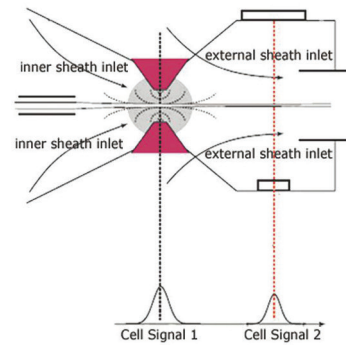
#### Exceptional cellular alarm function

Fragment, plasmodium, cell tolerance, PLT aggregation, Low HGB in RBC, abnormal scatter diagram custom parameters alarm recheck.

Provide multinomial research parameters: specific lymphocyte, immature cell, unrecognized cell etc.

#### Floating classification technology

Automatically adapt to the change of scatter gram, effectively identify the boundaries of various cells, to obtain more accurate WBC classification results.





# ES-HEM5800

## 5 Part Auto Hematology Analyzer

### Technical Specification

#### Technical Specifications

Optical solid state LASER scattering Wide angle light scatter. High efficient light collector(patented)  
Electrical Impedance. Double hydrodynamic focusing

#### Parameters

LYM#, Mon#, Neu#, Bas#, Eos#, LYM%, Mon%, Neu%, Bas%, Eos%, Lx, Ly, Nx, Ny, WBC, RBC, Hb,HCT, MCV, MCH, MCHC, RDW-CV, RDW-SD\*, Plt, Pct, MPV, PDW

1 Scattergrams: WBC Interpreted Scattergram

4 Histograms: RBC, PLT, WBC, cyto

#### Throughput

Up to 90 samples per hour(Auto sample mode/open sample≥90samples per hour)

#### Display

12.1Inch Touch Screen

#### Sample types

Whole blood, PLT only, HB only, Capillary predilution, Diluent, Control, Calibrator

#### Performance

Parameter	Linearity range	Precision (CV%)
WBC	0.1-100	2.0 (4.0-10.0)
RBC	0-9.99	1.5 (3.5-5.5)
HGB	0-300	1.0(110.0-160.0)
MCV	45-135	0.5(80.0-100.0)
PLT	0-1000	4.0(100-300)

#### Sample volume

Prediluted: 20μL

Whole blood: 10μL

#### Carryover

WBC<0.5%, RBC<0.5%, HGB<0.5%, PLT<0.8%

#### Mult-language

English

others can be customized

#### Data storage capacity

Up to 100,000 results including numeric and graphical information

#### Printout

External Laser printer/Inkjet printer, various printout formats and user-defined formats

#### Operating Environment

Temperature:10-35°C

Humidity:30%~85%

#### Power Requirement

AC 100-240V 50/60HZ

#### Dimension

Instrument:532mmx400mmx520mm

Package: 696mmx576mmx696mm

#### Weight

Net:28KG Gross:32KG



ESSE3 srl, Via Garibaldi 30  
14022 Castelnuovo D.B. (AT)  
Tel +39 011 99 27 706  
Fax +39 011 99 27 506  
e-mail [esse3@chierinet.it](mailto:esse3@chierinet.it)  
web: [www.esse3.dreamgest.com](http://www.esse3.dreamgest.com)

